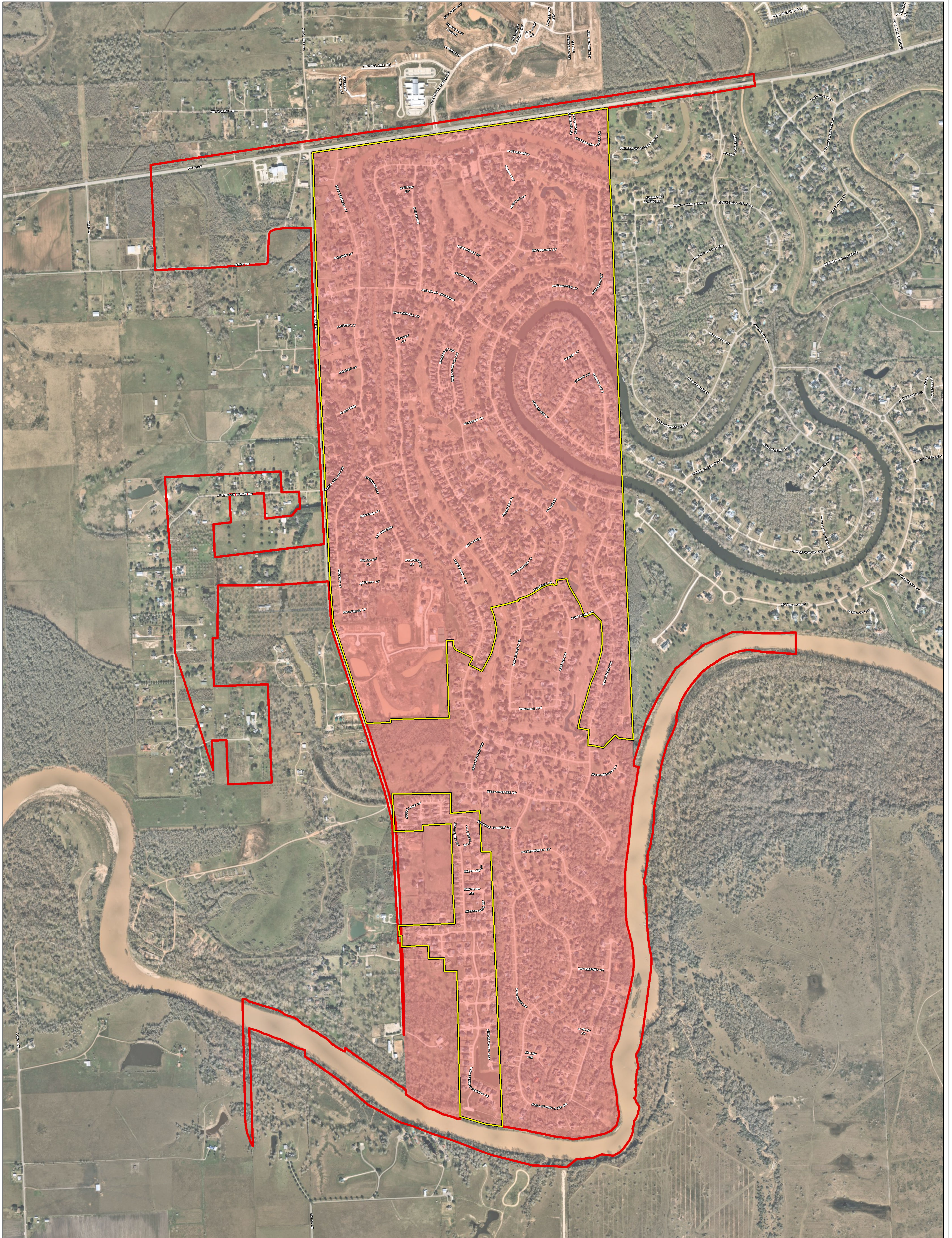
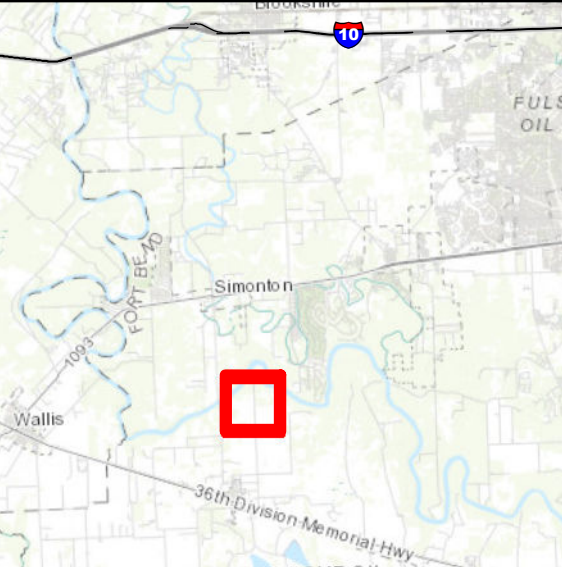


# BOUNDARY MAP



**VICINITY MAP**  
1 INCH = 5 MILES



**CITY OF WESTON LAKES**  
FORT BEND COUNTY, TEXAS

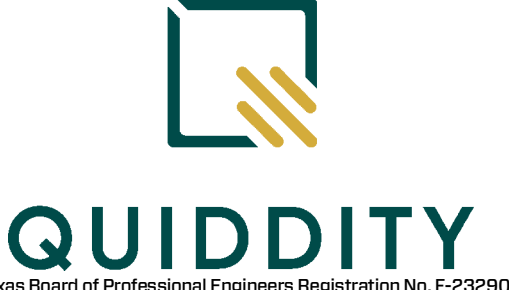
**LEGEND**

- FBCMUD No. 81
- City of Weston Lakes ETJ
- City of Weston Lakes



0 700  
1 INCH : 700 FEET  
IMAGERY PROVIDED BY NEARMAP ©

Disclaimer: This product is offered for informational purposes and may not have been prepared for or be suitable for legal, engineering, or surveying purposes. It does not represent an on-the-ground survey and represents only the approximate relative location of property, governmental and/or political boundaries or related facilities to said boundary. No express warranties are made by Quiddity Engineering concerning the accuracy, completeness, reliability, or usability of the information included within this exhibit.



Texas Board of Professional Engineers Registration No. F-23290